

# AUDL

Architecture • Urban Design • Landscape

FROM **DREAM** SPACES TO **REAL** PLACES



الإبداع العربي  
للإستشارات الهندسية  
Arabian Creativity Consultant



راك RAK  
للإستشارات الهندسية

Workneering  
work with freelancer engineers

DEEP BLUE SRL



IDENTITY  
Engineering Consultants



# ABOUT US

FROM DREAM SPACES TO REAL PLACES

**WHO  
WE ARE ?**

---

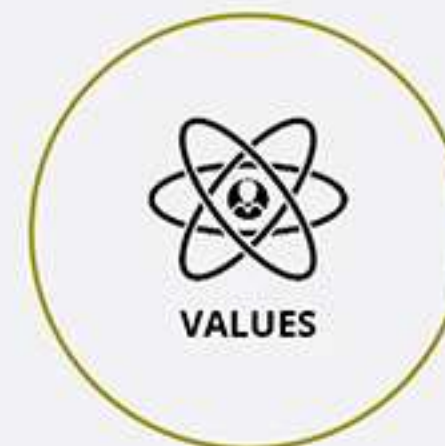


## ABOUT US

AUDL is a leading and trusted engineering consulting firm in Architecture, urban design, urban planning, landscape and other engineering services to provide integrated and comprehensive services according to the requirements of our client's practice which has world-class experience in creating inspirational, dynamic and authentically engaging spaces within a local and international portfolio.

We believe that Landscape design creativity adds value to any project and strive to implement innovative design solutions. We are a creative ideas company, passionate about landscape architecture and conservation, with the ability to deliver excellent services within the entire spectrum of landscape architecture. We have a proven track record in the delivery of multiple prestigious projects nationwide and internationally.

**A** **ARCHITECTURE**  
**U** **URBAN**  
**D** **DESIGN**  
**L** **LANDSCAPE**







## OUR VALUES

We earn our clients' confidence through innovative design and sound business decisions that are grounded in collaboration and experience. We bring dynamic design teams together to develop exceptional projects for our clients. Our attention to detail is foundational to the successful completion of our projects. Our unparalleled respectful, knowledgeable and honest service is the prime reason our clients choose to continually do business with us.



## MISSION

The mission of the department is to educate future architects, scholars, decision-makers, and agents of change, who have social, environmental, and ethical sensibilities when they frame an argument, synthesize design problems, and develop alternate possibilities. New forms of critical thinking and research-oriented learning are stressed through our studio-based holistic curricula, our integration of theory and practice, and our variety of post-graduate programs.



## VISION

Establish the importance of all matters relating to landscape and landscape architecture as the physical, socio-economic, cultural, visual, conceptual and spatial context of our communities. We are holistically minded, design-inspired, environmentally responsible and technology-driven.



**Our competitive edge is founded on seven core competencies:**

*From Dream Spaces to Real Places*



**OUR CORE VALUES**

INNOVATION

CREATIVITY

INTEGRITY

WELLBEING



TEAMWORK

SUSTAIN-  
ABILITY

COLLABO-  
RATION



# WHAT MAKES US DIFFERENT ?



The name "AUDL" is drawn from our inspiration meaning art of engineering and core of design Architecture, Urban Design and Landscape.

Our journey has started with growth, innovation, passion and a commitment to excellence.

We are not merely a company; we are a force for positive change in design field.

The passion drives us to create smart and creative solutions that transform lives, environment and communities for better, that is rewarding for generations to come our team collaborative spirit fosters innovation, allowing us to leave a positive mark on every project.

Our solutions will transcend borders, benefiting people and we are committed to sustainable practices.

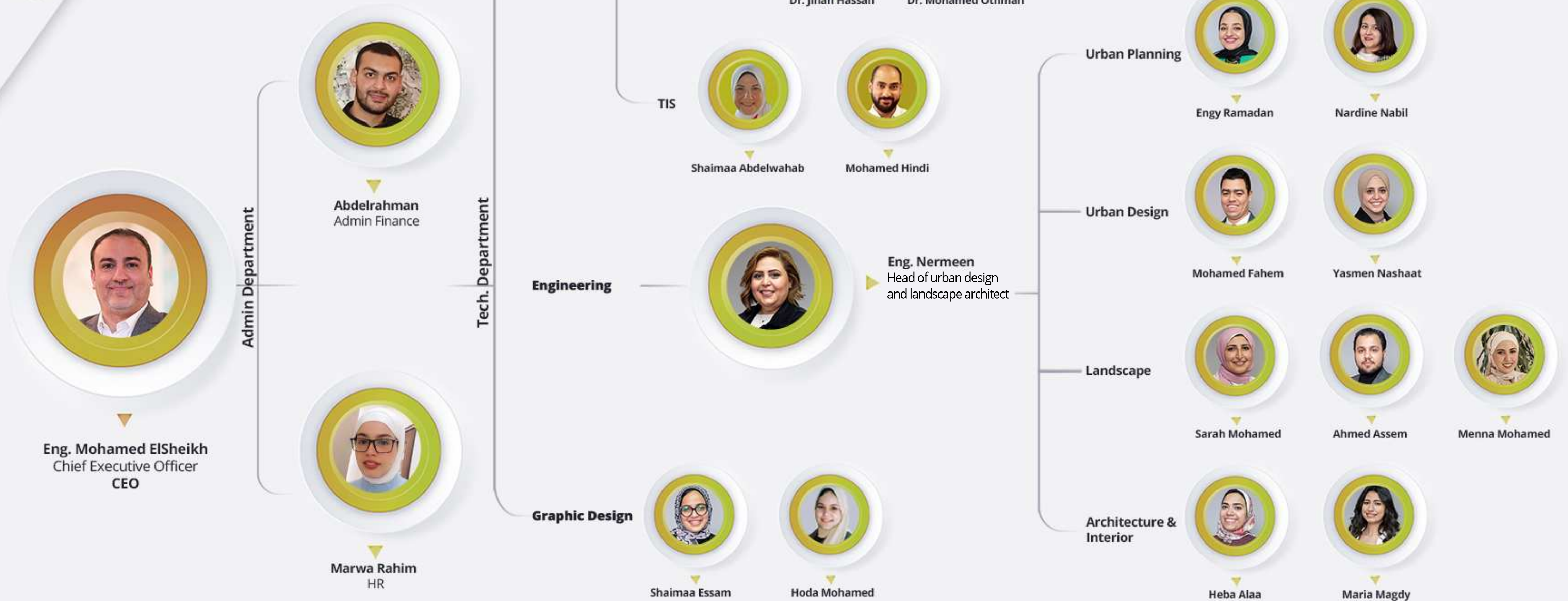
Our vision includes environmental stewardship and social responsibility.

We wish you to be part of our dream remarkable voyage. Together, we will shape a brighter future.

*Mohammed El-Sheikh*  
CEO, Co-Founder



# Our People





# OUR SERVICES

FROM DREAM SPACES TO REAL PLACES

**WHAT DO  
WE DO** ?

---



## OUR SERVICES

**AUDL** is a leading and trusted engineering consulting firm in Architecture, urban design, urban planning, landscape and other engineering services to provide integrated and comprehensive services according to the requirements of our client's practice which has world-class experience in creating inspirational, dynamic and authentically engaging spaces within a local and international portfolio.

**We believe** that Landscape design creativity adds value to any project and strive to implement innovative design solutions. We are a creative ideas company, passionate about landscape architecture and conservation, with the ability to deliver excellent services within the entire spectrum of landscape architecture. We have a proven track record in the delivery of multiple prestigious projects nationwide and internationally.





**OUR  
SERVICES**

FROM DREAM SPACES TO REAL PLACES

**Urban  
Design**

**Graphic  
Design**

**Urban  
Planning**

**Gis**

**AUDL**  
Architecture · Urban Design · Landscape

**Bim**

**Landscape  
Design**

**Architecture  
Interior**

**Infrastructure**





# URBAN DESIGN & MASTER PLANNING

---

Urban and regional planning involves a range of tasks and responsibilities aimed at developing land useplans and programs to create and improve communities ,accommodate population growth, and revitalize physical facilities. Here are some key aspects of the work carried out by urban and regional planners







# LANDSCAPE DESIGN

---

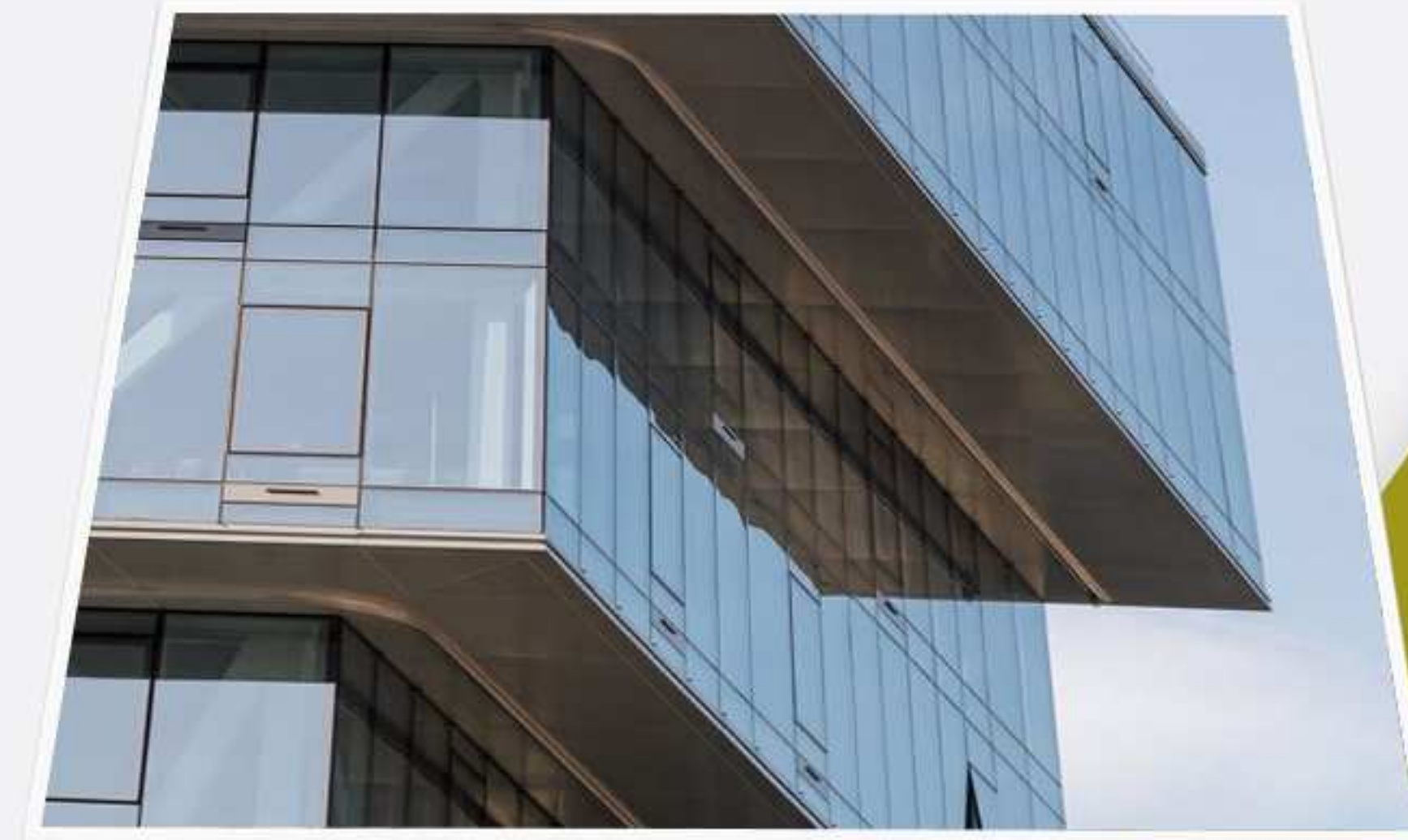
Landscape design involves the planning, design, and implementation of outdoor spaces, including gardens, parks, residential yards, commercial landscapes, and public spaces. Here are some key aspects of work carried out by landscape designers





# ARCHITECTURAL & INTERIOR DESIGN

Architecture design involves a wide range of work carried out by architects and designers to create and shape the built environment. Here are some key aspects of work carried out in architecture design :







# UTILITIES INFRASTRUCTURE

---

**Infrastructure** is defined as the basic physical systems of a business, region, or nation and often involves the production of public goods or production processes. Examples of infrastructure include transportation systems, communication networks, sewage, water, and school systems.



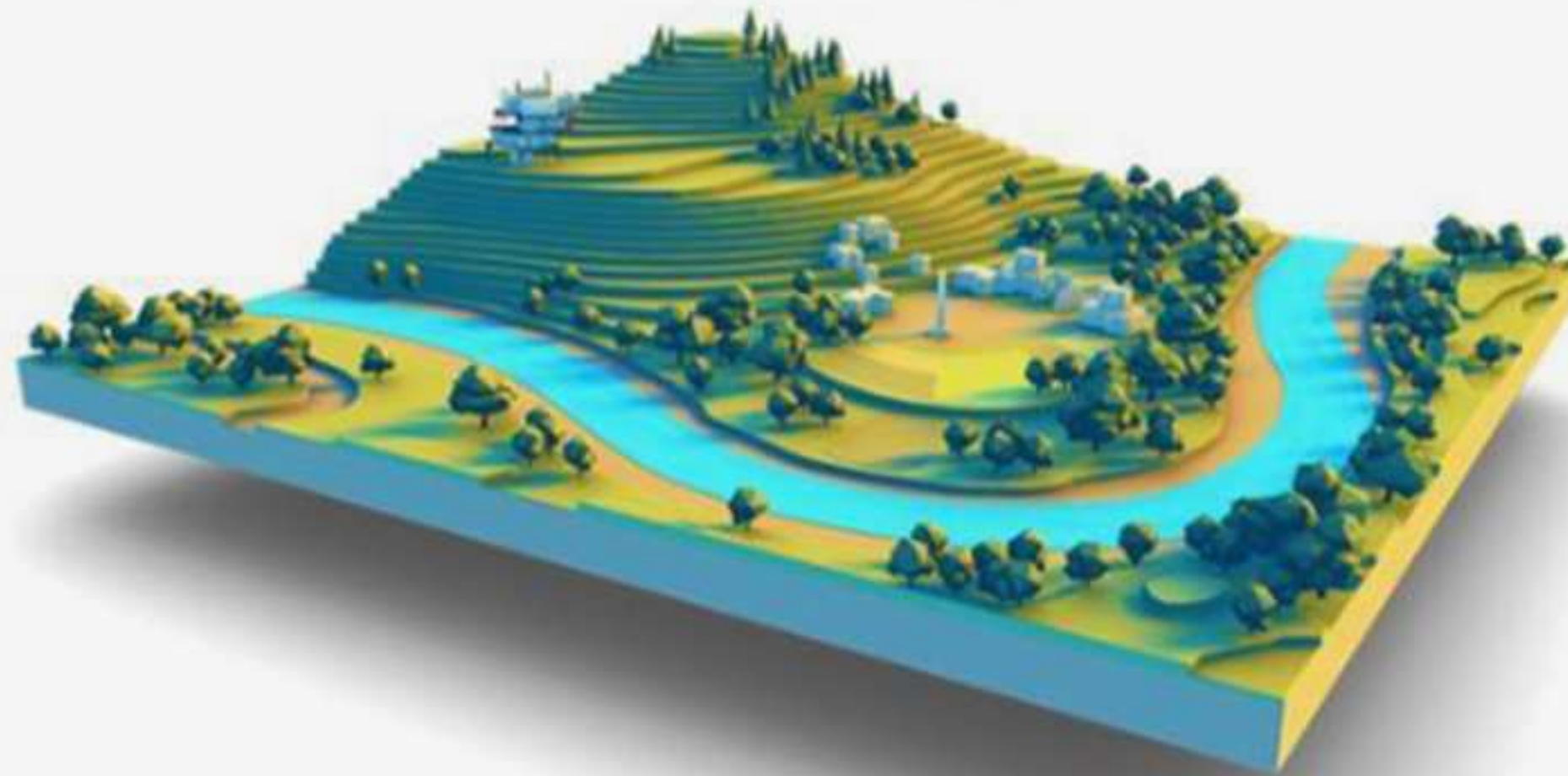




# GEOGRAPHIC INFORMATION SYSTEMS (GIS)

---

AUDL is a unique to have the latest technologies in GIS, as well as having a team of experts who specialize in collecting, maintaining, analyzing, developing, and distributing spatial data and information. This enables people to more easily see, analyze, and understand patterns and relationships. These systems process, analyze and display spatial and descriptive information for many purposes, and help in planning and decision-making in relation to agriculture, tourism and city planning, as well as managing the infrastructure of city.







# ILLUSTRATION AND GRAPHIC DESIGN

---

**Graphic design** is a multidisciplinary branch of design and fine arts. Its practice involves creativity, innovation and lateral thinking using manual or digital tools. Motion graphics are a way to communicate with the viewer, and add depth to the story. Together with music and effective copy, they can give us a message. We use them to create ads, title sequences for movies, explainer videos, and to share information.







# BIM SERVICES

---

**Building information modeling (BIM)** is the holistic process of creating and managing information for a built asset. Based on an intelligent model and enabled by a cloud platform, BIM integrates structured, multi-disciplinary data to produce a digital representation of an asset across its lifecycle, from planning and design to construction and operations. We use BIM for every sector (architecture, civil engineer, Mechanical, electrical , plumbing (MEP), & structural engineer) Using software as Revit ,AutoCAD, civil 3D,.....





FROM DREAM SPACES TO REAL PLACES

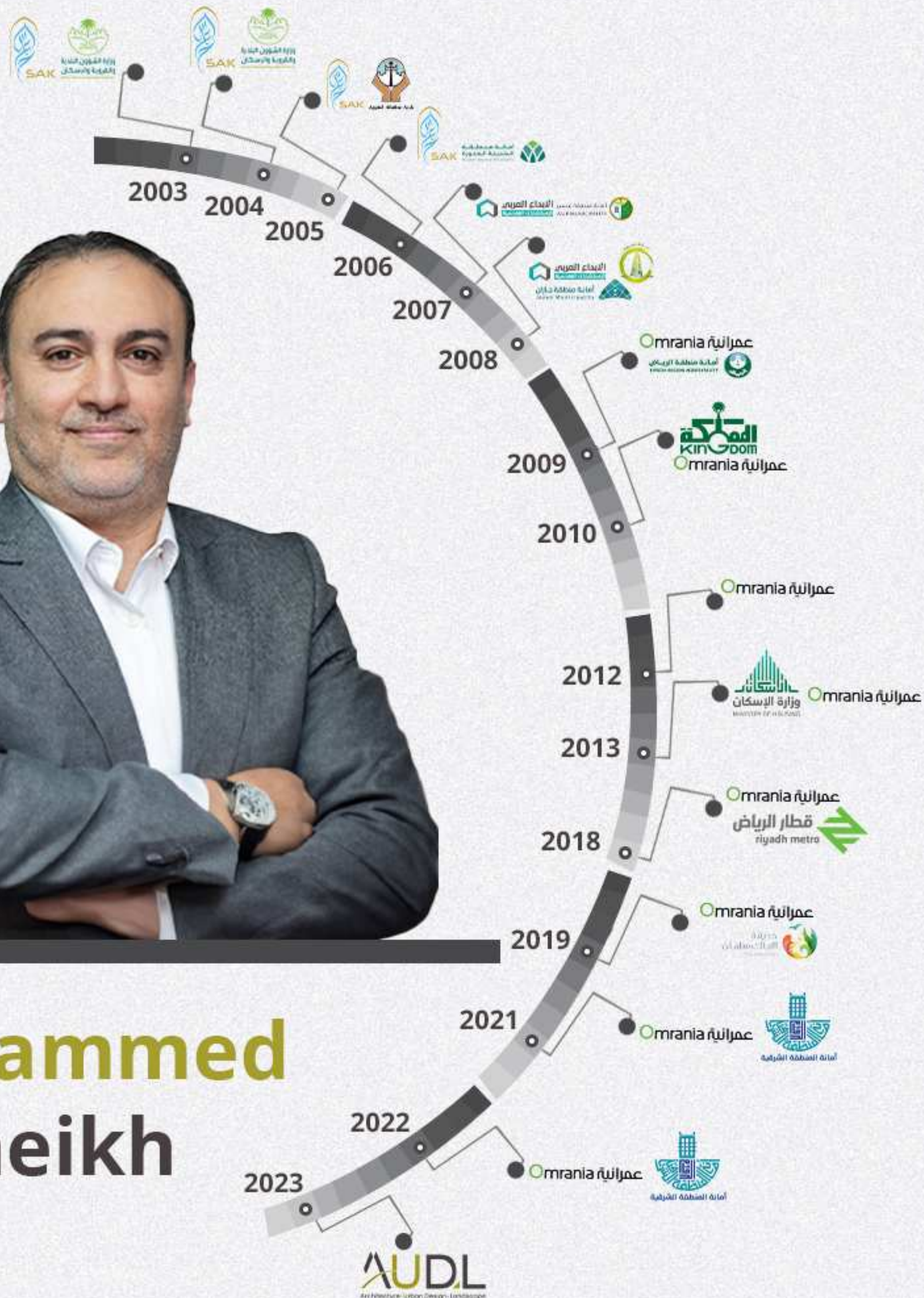
# OUR TEAM EXPERTISE

---





**Mohammed  
El-Sheikh**



## CEO, Co Founder

*MBA (Management) Int. University Of America, London, School Of Business- 2011.*

*B.Sc., Urban Design & Urban Planning, Cairo University, Faculty of Urban and Regional Planning, June 2001.*

## Qualification & Skills:

- AUTOCAD software
- Arc map 10.2
- Super Map 7
- Prezi
- Microsoft office software
- Photoshop software
- IN Design software
- Sketch up software
- Adobe software ( Adobe Premiere , ..... )
- GIS software
- Manual sketches and presentation
- Revit (BIM) software

- **Chief Executive Officer.**  
AUDL Consultant  
(Egypt, Cairo) September 2023 Up to date (2024).
- **Senior Master Planner & Project Coordinator.**  
Omrania & Associates.  
(KSA, Riyadh) July 2008 – July 2023.
- **Senior urban planner & Project Coordinator.**  
Arabian Creativity Consultant  
(Riyadh & Abha) June 2006 - July 2007.
- **Team Leader Urban planner & GIS Applications.**  
Suleiman Abdullah Khraigy-SAK Consultant  
(KSA, Riyadh) November 2003 – March 2006.



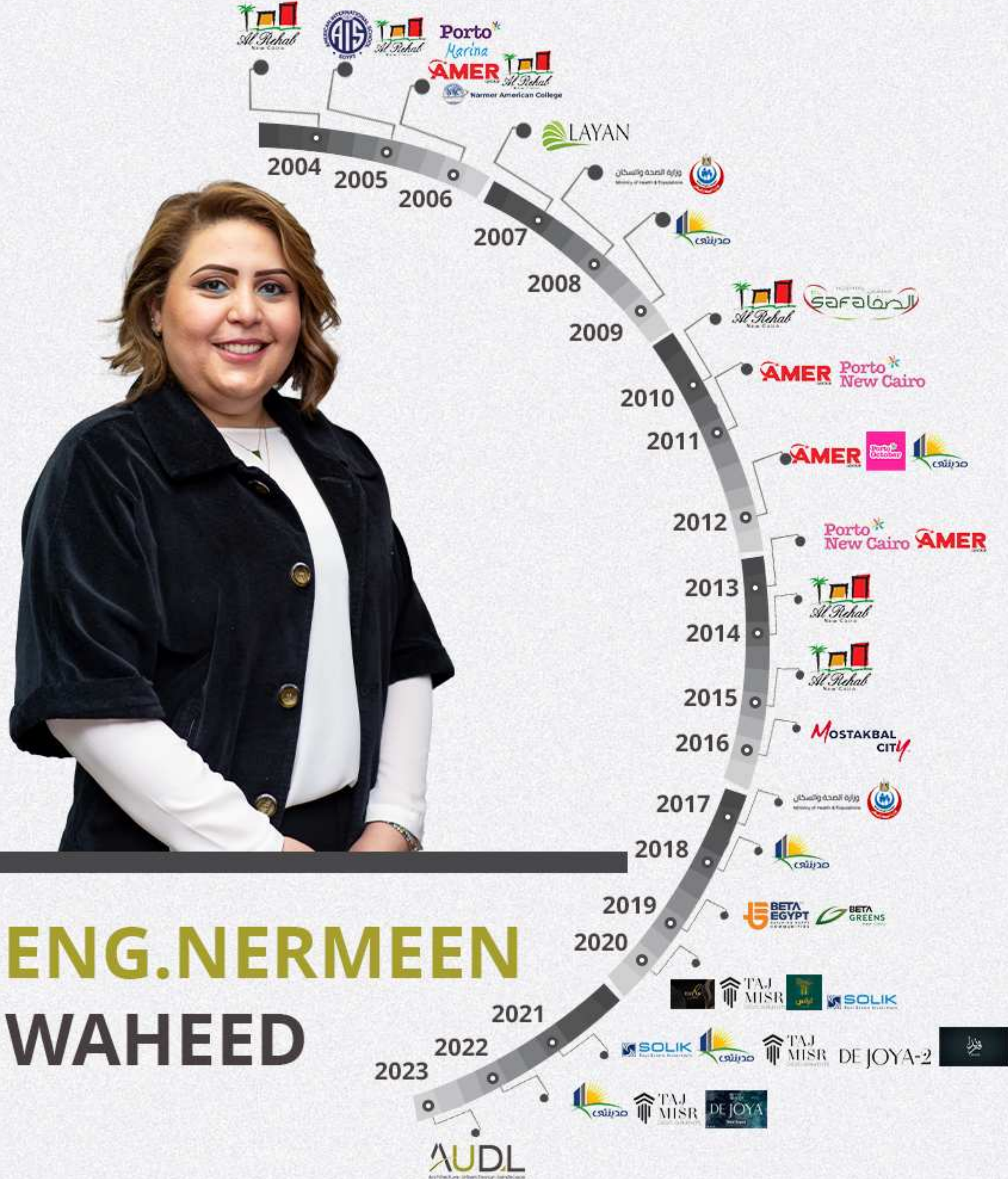
# Head Of Urban & Landscape Design Operation Manager

*Landscape Consulting Engineering,  
B.Sc., Urban Design & Urban Planning, Cairo University,  
Faculty of Urban and Regional Planning, June 2004.*

## Qualification & Skills:

- AUTOCAD software
- Microsoft office software
- Sketch up software
- Lumion software
- 3Ds Max software
- Adobe software
- Manual sketches and presentation
- Revit (BIM) software

**ENG. NERMEEN  
WAHEED**





## SENIOR LANDSCAPE ARCHITECT

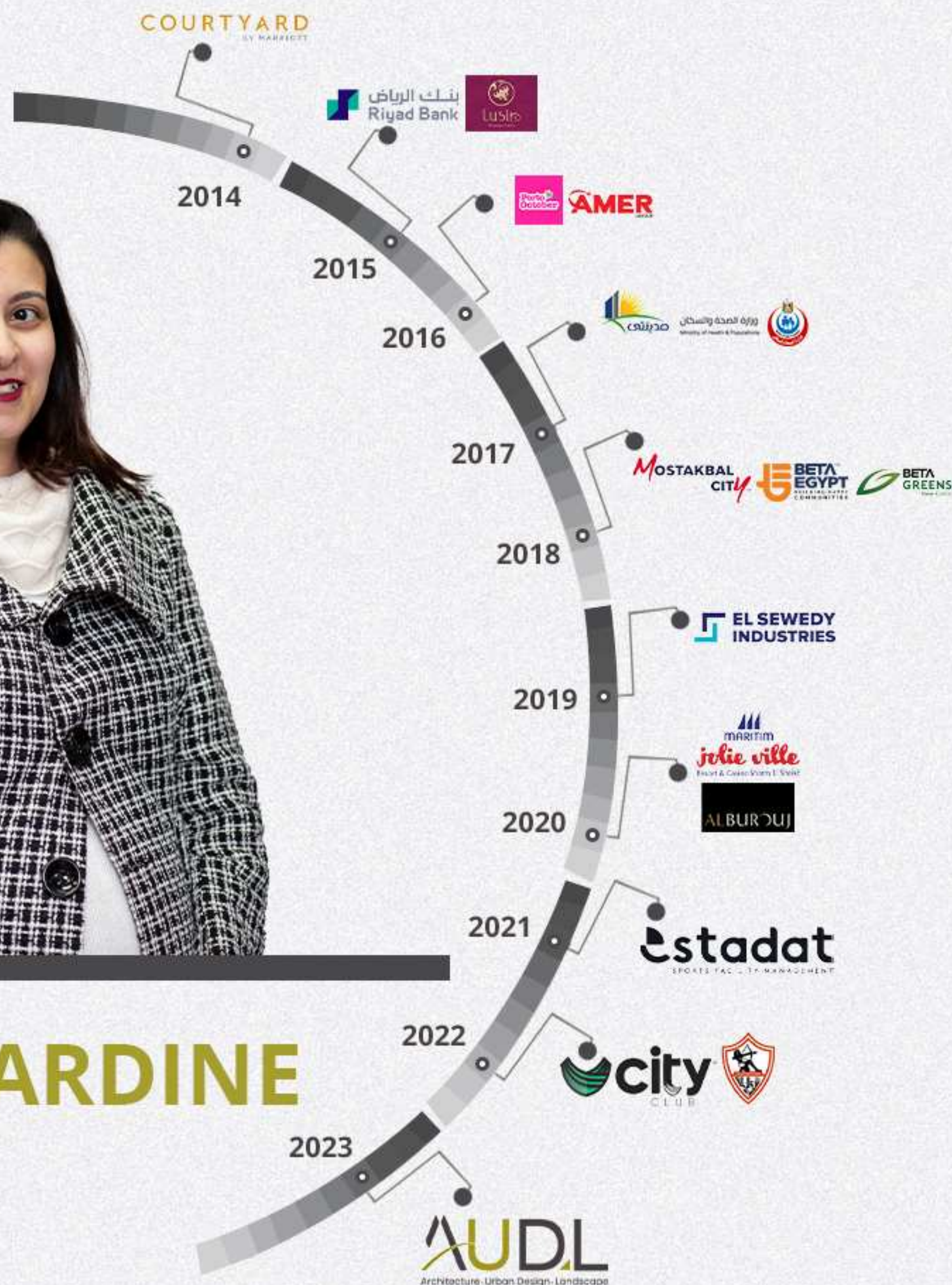
*B.Sc., Architecture Engineering , Misr International University,  
June 2013.*

### Qualification & Skills:

- AUTOCAD software
- Revit Architecture
- Photoshop software
- IN Design software
- Sketch up software
- 3Ds Max software
- Lumion software
- Revit Landscape (Beginner)
- Microsoft office software



**ENG.NARDINE  
NABIL**





## SENIOR LANDSCAPE & URBAN DESIGN ARCHITECT

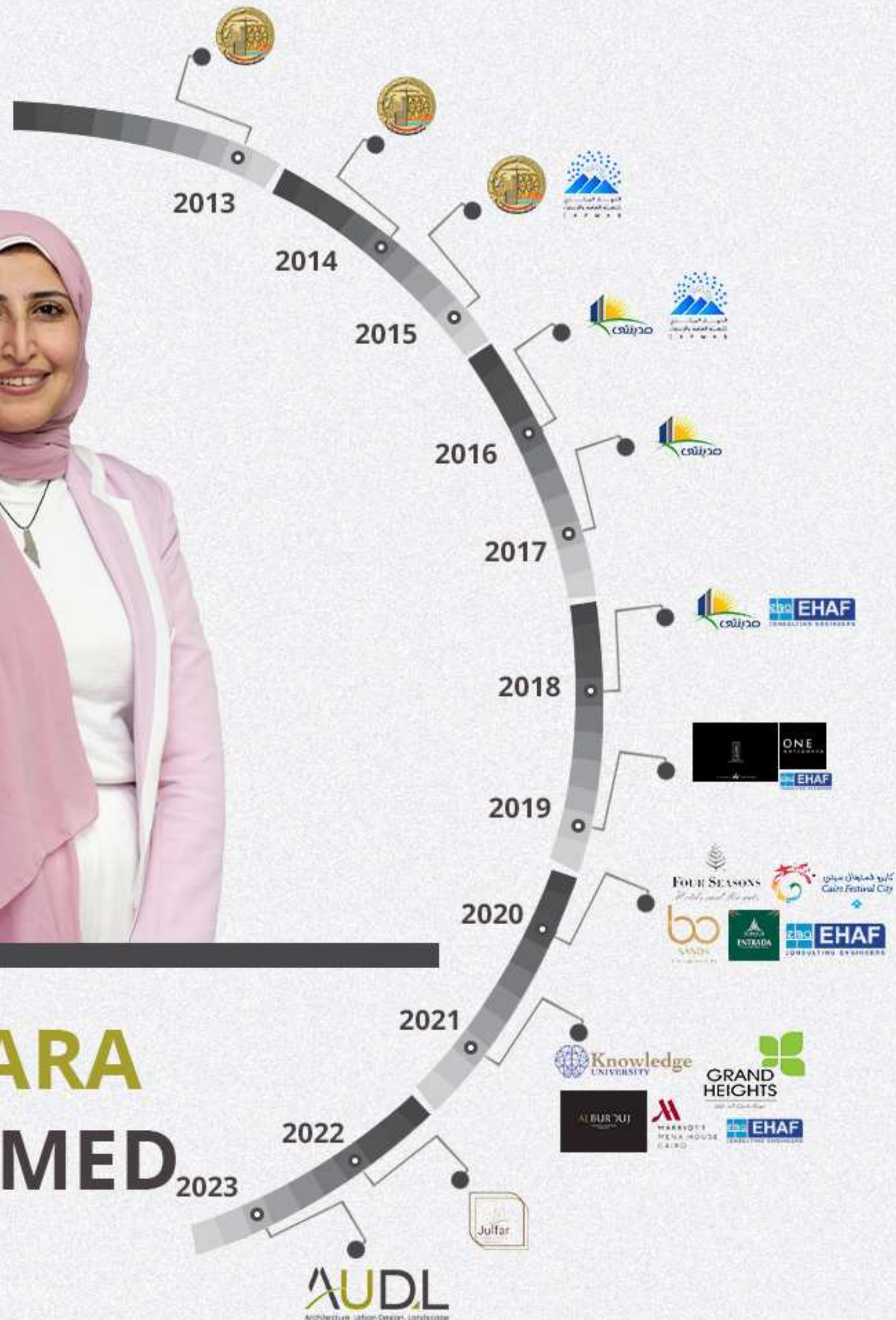
*B.Sc., Urban & Regional Planning, Al-Azhar University, Faculty of Urban and Regional Planning, June 2013.*

### Qualification & Skills:

- AUTOCAD software
- Microsoft office software
- Photoshop software
- IN Design software
- Sketch up software
- GIS software
- Manual sketches and presentation
- Revit (BIM) software



**ENG.SARA  
MOHAMED**





## SENIOR ARCHITECT & PM CORDINATOR

*Scientific Interior Design Diploma with The American University  
In ( Egypt, Cairo ) ,April 2020*

*Professional Program in Project Management  
(PRMG) with The American University In ( Egypt, Cairo ) ,  
June 2023*

*B.Sc., Architectural Engineering, Modern Science  
& Arts University, June 2013.*

### Qualification & Skills:

- AUTOCAD software
- Revit software
- Microsoft office software
- Photoshop software



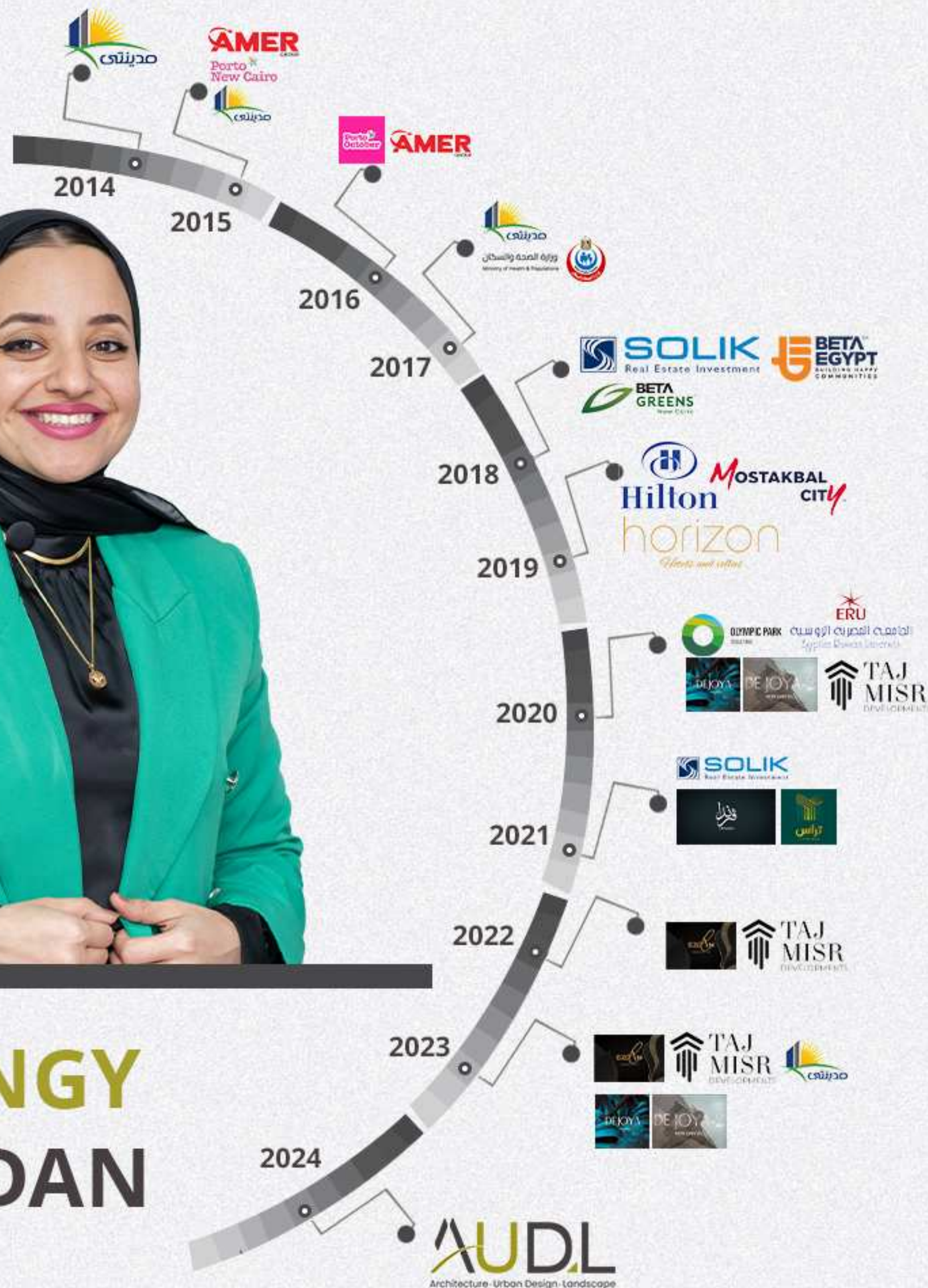
**ENG.HEBA  
ALAA**







**ENG. ENGY  
RAMADAN**



## Senior Urban Design Architect

*PHD in the subject of  
The Resilience of Egyptian Cities against Health Crises  
'Egyptian Pandemic City Tool'*

*Master's Degree in the subject of  
(Sustainable Waste Management for Urban Areas).*

*B.Sc., Urban Design Division of the Department  
of Urban Design, Cairo University,  
Faculty of Urban and Regional Planning, June 2014.*

### Qualification & Skills:

- AUTOCAD software
- Microsoft office software
- Photoshop software
- Sketch up software
- Manual sketches and presentation



## SENIOR URBAN DESIGN ARCHITECT

*Master's Degree in the subject of (Framework for Smart Campus Design Guidelines).*

*B.Sc., Urban Design & Urban Planning,  
Cairo University, Faculty of Urban and Regional  
Planning, June 2017.*

### Qualification & Skills:

- AUTOCAD software
- Microsoft office software
- Sketch up software
- Lumion software
- Adobe software
- GIS software
- Manual sketches and presentation
- City Engine software
- Revit (BIM) software
- SPSS statistics software



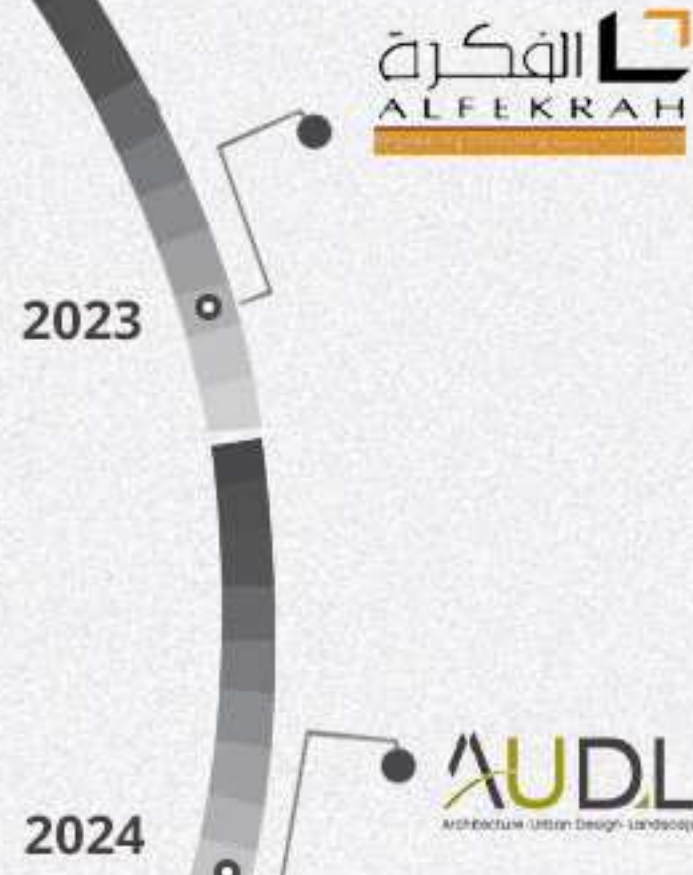
**ENG. MOHAMED  
FAHIM**







**ENG.YASMEN  
NASHAAT**



## JUNIOR ARCHITECT

*B.Sc., Architecture, Helwan University,  
Faculty of Engineering, June 2022*

### Qualification & Skills:

- AUTOCAD software
- Revit Architecture Software
- Microsoft office software
- Photoshop software
- IN Design software
- Sketch up software
- Lumion software
- Manual sketches and presentation





**ENG.MENNA  
MOHAMED**



## JUNIOR ARCHITECT

*B.Sc., Architecture, Helwan University,  
Faculty of Engineering, June 2022.*

### Qualification & Skills:

- AUTOCAD software
- Revit Architecture
- Lumion
- Microsoft office software
- Photoshop software
- IN Design software
- Sketch up software
- Rhinoceros
- Grasshopper





**MARIA  
MAGDY**



## JUNIOR URBAN PLANNING ARCHITECT

*B.Sc., Architecture & Urban Planning,  
Ain Shames University, Faculty of Engineering, June 2023.*

### Qualification & Skills:

- AUTOCAD software
- Microsoft office software
- Photoshop software
- IN Design software
- Revit
- Lumion
- Sketch up software
- Rhinoceros





**ENG AHMED  
ASSEM**



## Junior Landscape Architect

*Bachelor's in urban design and regional planning  
Cairo University 2014*

### Qualification & Skills:

- AUTOCAD software
- 3Ds Max software
- Revit software
- Vray software
- Corona software
- Lumion software
- Microsoft office software
- Photoshop software
- Sketch up software
- Davinci resolve software



## SENIOR GRAPHIC DESIGNER

*B.Sc., Fine Arts, Helwan university,  
Graphics Department, June 2018.*

### Qualification & Skills:

- Microsoft office software
- Photoshop software
- IN Design software
- Adobe software ( Adobe Premiere , ..... )
- Manual sketches and presentation



**ENG.SAHIMAA**  
**ESSAM**







**HODA**  
**Mohamed**



## SENIOR GRAPHIC DESIGNER

B.Sc., Faculty of arts, Cairo university,  
Graphics Department, June 2022.

### Qualification & Skills:

- Microsoft office software
- Photoshop software
- IN Design software
- Adobe software
- Manual sketches and presentation
- Moho
- Cinema 4D





# Trusted By

شركة المياه الوطنية  
National Water Company



الهيئة الملكية للجبيل وينبع  
ROYAL COMMISSION FOR JUBAIL & YANBU



أمانة منطقة الرياض  
RIYADH REGION MUNICIPALITY



وزارة البيئة والمياه والزراعة  
Ministry of Environment Water & Agriculture



وزارة المالية  
Ministry of Finance



وزارة الشؤون البلدية والقروية والإسكان  
Ministry of Municipal Rural Affairs & Housing



الهيئة الملكية لمدينة الرياض  
ROYAL COMMISSION FOR RIYADH CITY



المركز الوطني  
لتنمية الغطاء النباتي ومكافحة التصحر  
National Center for Vegetation Cover  
Development & Combating Desertification  
المملكة العربية السعودية



وزارة العدل  
Ministry of Justice



محمد يوسف ناغي  
MOHAMED YOUSUF NAGHI







# Our Partners

We've Worked With A Wide Range Of Clients From Different Countries And Geographical Locations. Our Experience Spans From Dream Spaces To Real Places.



الإبداع العربي  
للإستشارات الهندسية  
Arabian Creativity Consultant



IDENTITY  
Engineering Consultants

DEEP BLUE SRL



El-Eshaam qualidev  
Development & Investment



# WHERE WE ARE



FROM DREAM SPACES TO REAL PLACES





# FROM DREAM SPACES TO REAL PLACES

## Contact us;

+2 227 039 17

3 El Serag Mall Nasr City, Cairo - Eg

info@audldesign.com

www.audldesign.com



**AUDL**  
Architecture - Urban Design - Landscape





**THANK YOU**

---

FOR YOUR TRUSTING

[www.audldesign.com](http://www.audldesign.com)

